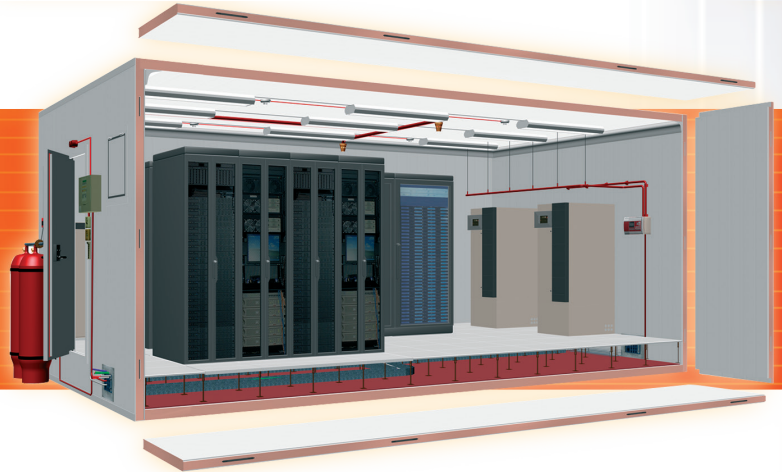


Multi-Threat Modular Construction Solutions



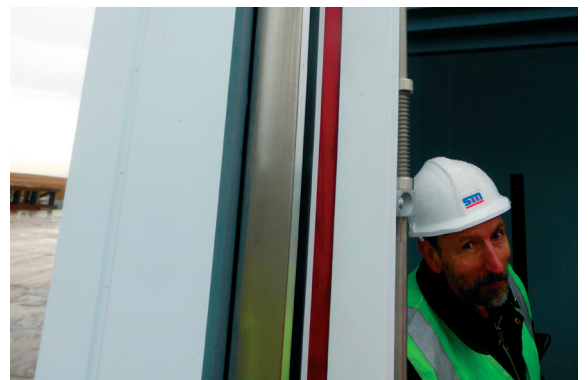
BLAST - BALLISTICS - FORCED ATTACK - FIRE

BLAST

Tested by DNV-GL with 100 Kg TNT equivalence



▲ C25: 25m standoff. Peak Pressure: 96 KPa. Peak Impulse: 488 KPa



▲ Same enclosure rotated and re-tested

C15: 15m standoff. Peak Pressure: 290 KPa. Peak Impulse: 1023 KPa

No Internal Fragments. Doors Fully Operable. Pass.

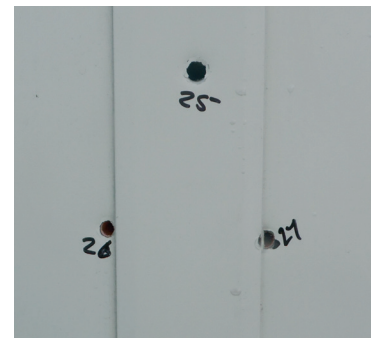
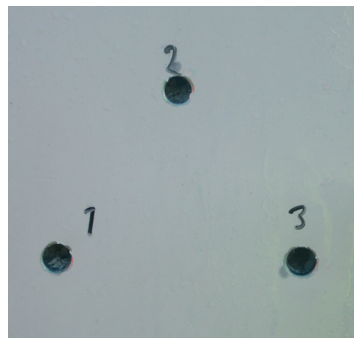
BALLISTICS

BS EN 1522/23–1999

Test Specification for Bullet Resistance—Windows, Doors, Shutters & Blinds

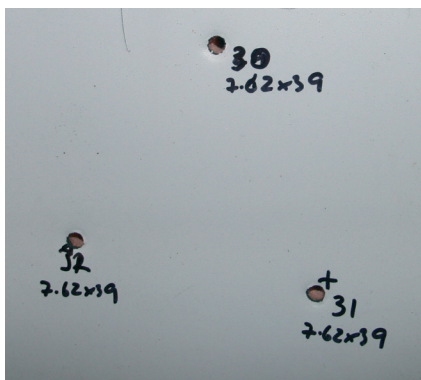
	Class Threat Level	Type of Weapon	Calibre	Ammunition	No of Shots	Velocity (m/s)	Test Range (m)	Spacing (mm)
	FB1	Rifle	.22 LR	L/RN	3	360 +/- 10	10	120 +/- 10
	FB2	Hand Gun	9mm Luger	FJ1/RN/SC	3	400 +/- 10	5	120 +/- 10
	FB3	Hand Gun	.357 Magnum	FJ1/CB/SC	3	430 +/- 10	5	120 +/- 10
	FB4	Hand Gun	.44 Rem Magnum	FJ2/FN/SC	3	440 +/- 10	5	120 +/- 10
	FB5	Rifle	5.56x45	FJ2/PB/ SCP 1	3	950 +/- 10	10	120 +/- 10
	FB6	Rifle	7.62x51	FJ1/PB/SC	3	830 +/- 10	10	120 +/- 10
	FB7	Rifle	7.62x51	FJ2/PB/ HC 1	3	820 +/- 10	10	120 +/- 10
	FSG	Shot Gun	12/70	Solid Slug 3	3	420 +/- 20	10	-

A ModuSec GS-FB4 Enclosure was submitted for independent testing using the criteria of EN1522/23 for FB4 (.357 & .44) on panels, joints, doors, frames and interfaces.



- ▲ Certification to EN 1522/23 is not available for a complete enclosure. However, a 'Pass' was achieved on all elements of the build tested

The design of the ModuSec System allows inclusion of materials for protection up to FB7



- ▶ GS-FB4+ Test shots using AK-47 7.62 x 9mm Calibre (FB4+) Pass - No Spall
- ▶ GS-FB6 Test shots using 7.62 x 51mm Calibre (FB6) Pass - No Spall



Buildings, partitions or internal enclosures to any size

For further details visit www.modusec.com

Phone Remtech on **020 8786 8787** or email sales@remtech.com